

Givry

a batarde flamande

by Tom Grace

A B C D E F G H I J K L

M N O P Q R S T U V

W X Y Z Æ Œ þ

Givry Regular, 64/78pt

a b c d e f g h i j k l m n o p q

r s t u v w x y z ß æ ð ë ÿ ŷ

A B C D E F G H I

{ [(* & ☒ , : @ ! ! § u n)] }

€ £ \$ ¥ ¢ ✦ 0 1 2 3 4 5 6 7 8 9

0/00 3/4 0 1 2 3 4 5 6 7 8 9 0 1 2

a b c d f p w x z y    



A Bâtarde flamande

The bâtarde flamande is a style of writing used predominantly in France and present-day Belgium in the 15th century. The style shares an ancestry with other writing styles traditionally grouped as blackletter—fraktur, textura, rotunda, and schwabacher. It had evolved, however, into an aesthetic far removed from its relatives.

While high-contrast in nature, the bâtarde flamande is more delicate and dynamic than the austere and condensed fraktur and textura. Quick curves lack the rigidity of the schwabacher and rotunda. Flair through swashes is thematic, as are the variations in letterforms. The flowing rhythm, achieved through a letterform axis that is overall slightly rightward, is most noticeable in the hallmark *f* and long *s*. Round forms are fused together for economy of space. It is a writing hand that, with its syncopation and fluidity, produces a vibrance uncharacteristic of other blackletters.

Givry has been created in the spirit of the bâtarde flamande. It melds the particular traits compiled from the works of the style's prominent scribes—Jean Fouquet, Loyset Liédet, and Jean Bourdichon. While suitable as an elegant and energetic display face, Givry was conceived for setting continuous text. The result of many refinements and adjustments is the preservation of the style's irregular nature, as well as a consistency that continuous-text typography requires. Carefully researched and developed in OpenType format for a wealth of typographic features and support for more than forty languages, Givry is neither derivative nor experimental, but historically accurate.

Of the many blackletter digital typefaces available, fraktur and all its connotations have become representative. In contrast, the bâtarde flamande is essentially non-existent in digital form, and

has until now been overlooked.

Givry provides designers and anyone searching for typographic expression a lively, delicate, and striking side to blackletter.

TypeTogether

Veronika Burian and José Scaglione met at the University of Reading whilst completing their MAs in Type Design, launching the independent type foundry TypeTogether (TT for short) in 2006. TT developed out of the desire to publish high quality typefaces and work on new type projects together (hence the name). The foundry provides common grounds for intense cooperation with other type designers, creating an interesting and diverse platform.

TypeTogether's main interest is finding innovative and stylish solutions to old problems for the professional market of text typefaces, with a focus on editorial use. This is where the greatest challenges are faced: creating typefaces that perform well in continuous reading, that also have a high degree of personality.

The aesthetic and functional efficiency of TT's fonts are accompanied by excellence in technical performance. This is achieved using the latest font software, creating cross-platform OpenType fonts with extended character sets including: broader language support and all kinds of typographic refinements, such as small caps, ligatures and multiple numeral sets.

In addition to TypeTogether's high quality library of retail fonts, TT also provides custom modifications and specially tailored typefaces; these can serve as vital elements of a company's visual identity, by communicating a unique feel. Custom typeface projects are developed from solid foundations, based on the client's brief, targeted research and the open dialogue between all parties.

A big advantage of being a small and specialized company is that this allows for closer, and more direct, collaboration with clients; this is often necessary to accomplish their goals, and respond quickly to their needs.

The quality of TypeTogether's work has already been recognized in several international competitions, including TDC and ED-Awards.

L'art du livre & l'écriture du x^e siècle

Vibrant

a soft breeze and the harvest moon

fiery brilliance

It was at that moment, under the stars, that he proposed

Quintet St George

Arabesque n° 2, Claude Debussy

ein zauberhafter Abend

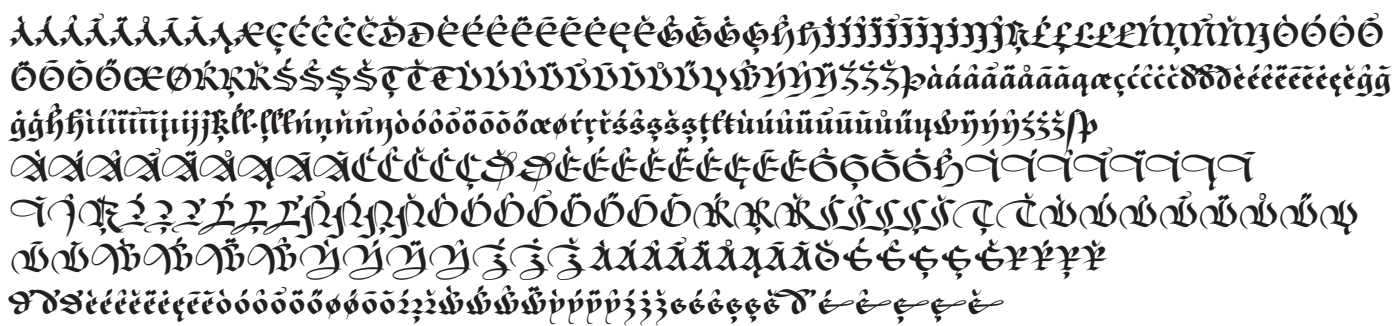
 Dignité 

hues of aureolin & violet flooded the room

characteristic



Qivry covers over 40 languages that use the Latin alphabet



Czech

Národní divadlo začalo s vydáváním cd v roce 2002, po nástupu nového ředitele Daniela Dvořáka, který do funkce šefa opery přizval svého dřívějšího kolegu ze Státní opery Praha Jiřího Nekvasila. První vydanou operou byl Mozartův Don Giovanni, vyšly i živé nahrávky Zprávy pro akademii Jana Klusáka, Smolko Nagano a další. Zatím poslední je komplet s nahrávkou mimořádného provedení Prstenu Nibelungova od Richarda Wagnera, které vzbudilo velkou pozornost na scéně před 2 lety. "cd slouží jako dokumentace, propagace opery Národního divadla, je k dispozici knihovnám..." říká Jiří Nekvasil. V průběhu pěti let se objevovala i díla českých autorů, například Dvořákův Čert a Káča. "V současné době ty nahrávací společnosti, které to kdysi dělaly, jako třeba Supraphon, které nahrávaly a dokumentovaly celou jednu generaci, dnes asi z finančních důvodů opery netočí. Je to idea, která nás napadla už

Polish

Posłowie z Komisji edukacji chcą tworzyć przy uniwersytetach publicznych szkoły dla wybitnie zdolnych uczniów. Ale czy młodzież powinna być selekcjonowana, a zdolne dzieci trafić do elitarnych szkół? – To najlepsze rozwiązanie, uważa prof. Wiesława Limont, pedagog z Uniwersytetu Mikołaja Kopernika w Toruniu, przy którym taka szkoła już istnieje. – W zwykłych klasach dzieci o ponadprzeciętnych uzdolnieniach osiagają słabe wyniki. Nie rozwijają skrzydeł i zniechęcają się do nauki. Pomysł budzi jednak kontrowersje. Psycholog społeczny prof. Wiesław Łukaszewski: – Dziecko potrzebuje różnorodnych bodźców, nie tylko tych intelektualnych. Takie szkoły działają w Związku Radzieckim i okazało się, że był to wielki niewypał. Zwolennicy pomysłu odpierają ten zarzut: podobne szkoły funkcjonują w USA i wielu krajach UE. W Polsce dziś jest jedna taka placówka – Gimnazjum i Liceum Akademickie. Oblegane od 1998 r.

Hungarian

Klubunk idén is szeretne támogatni két tehetséges magyar zongoraművészt a CEU/Cliburn zongoraversenyen való részvételre. 21 országból 89 jelentkező közül Polgar Éva és Fazekas Ede a válogató versenyek után bejutottak a végső fordulóra, ami itt lesz Fort Worthben. Ungar Tamás teljes ösztöndíjat ajánlott föl nekik. A részvételi díj \$1,100 fejenként. Ehhez szeretnénk erőnkhez mérten hozzájárulni, amihéz nagykelkű támogatásokat kérném. Bővebb felvilágosítás a művészekről a fesztivál web oldalán található: www.pianotexas.org. "Young Artists Program" "Information on Performing Artists" Éva és Edit koncertet adnak az érdeklődők számára, amit rövid fogadás követ. Időpont: 2006. június 3-án, szombaton délután 4:00 órakor. Helyszíne egy családi ház: Mrs. Chuifun Doon, 6940 Laurel Valley Drive, Fort Worth, tx 76132 (Gated Community). A belépődíj: \$20 személyenként. A jegyek csak elővételben vehetők meg, mert a

multi-character ornaments



swashes

Los ABCD av nüð nēð nada loe
los ABCD av nud ned nada los

Discretionary ligatures

Ch ch Dd Dc li li ld tt
Ch ch dd dc li li ld tt

historical alternates

Foi roses @ jaipur 24A
Koi roses & jaipur 457

fractione

5/8 12/13 23/24 4678/4679
5/8 12/13 23/24 4678/4679

ordinale

f^o f^o 2^a 2^o 1^{re} 2nd 6^e
No no 2a 2o 1re 2nd 6e

superscripts, subscripts

h₂O ¹⁴C t_o
h2O 14C to

oldstyle figuree

0123456789\$%&'()*f

lining figuree

0123456789\$%&'()*f
0123456789\$%&'()*f

ligaturee

ff fh fi ffi fj fk fl ffl ft fff fk fi ffe ft fff
ff fh fi ffi fj fk fl ffl ft fff fk fi ffe ft fff

final forme

sparrows
sparrows

ornamente

☐ † * * * * * ☐ † * * * * * ☐ † * * * * *
abcdefghijklmnop

stylistic alternatee

compressed spacing, contextual alternates
og pá lo pp Ad re Or
og pá bo pp Ad re Or

stylistic set 1

several alternate forms
AdS dén vwy
AdS dén vwy

Givry Opentype features

stylistic set 2

like stylistic alternates: compressed spacing
og pá lo pp
og pá bo pp

stylistic set 3

like stylistic alternates: contextual alternates
Ad rye Or
Ad rye Or

stylistic set 4

like final forms
sparrows
sparrows

stylistic set 5

like swashes: capitals
ABCD
ABCD

stylistic set 6

like swashes: lowercase
Los av nüð nēð nada loe
los av nud ned nada los

stylistic set 7

like historical alternates: longs, ampersand
roses @
roses &

stylistic set 8

like historical alternates: K, i, j
Foi jaipur
Koi jaipur

stylistic set 9

I/J substitution
Ils Juillet Indre Juli
Ils Juillet Indre Juli

stylistic set 10

like historical alternates: figures
24A
457

stylistic set 11

like ornaments
☐ † * * * * * ☐ † * * * * * ☐ † * * * * *
abcdefghijklmnop

swashes

A B C D E F G H I J K L M N O P Q R S T U V
 W X Y Z P Q
 r u e d d e e e e e
 a a a a a a a a a a c c c c d d e e e e e e e e
 o o o o h i i i i i i i i i i i i k k k k l l l l
 j j j j n o o o o o o o o k k k k l l l l
 s s s s t t u u u u v v v v w w w w
 x x x x y y y y z z z z

stylistic contextual alternate characters

A B C D E F G H I J K L M N O P Q R S
 T U V W X Y Z A B C D E F G H
 I J K L M N O P Q R S T U V W X Y Z

final form

S S S S S

historical alternates

Y y s e 2 e u r Y Y Y Y



typetogether

Type Design Tom Grace

COPYRIGHT ©2008 TYPE TOGETHER
ALL RIGHTS RESERVED

www.type-together.com